



Artist: Melissa Jacobs

Impact Report
SUMMARY VERSION 2020/2021

CONSCIOUS
INVESTMENT MANAGEMENT

Acknowledgment of Country

Conscious Investment Management acknowledges Traditional Owners of Country throughout Australia. We pay our respects to Aboriginal and Torres Strait Islander Elders past and present. We acknowledge that many of our investments exist on traditional lands where Aboriginal and Torres Strait Islander people have lived for many thousands of years. We honour their ongoing connection to these lands and strive to respect the traditional custodians in our work.



Image of SDA apartment building in Gold Coast | Image Credit: Peter Sexty

Reflections on the Past Year

A Message from Conscious Investment Management

Dear Reader,

The past 18-months have been like no other. The sheer scale of the impacts of COVID-19, as well as the examples of extraordinary adaptability we have all experienced, means that this period of our lives will be remembered as one where everything changed.

The coronavirus has reinforced our understanding that the impacts of social challenges fall disproportionately on our most vulnerable. We are also reminded that, like a pandemic, climate change can accelerate exponentially, and will have far reaching consequences for our planet and society if left unchecked.

Great learnings come from misfortune. The world and in turn markets will be better for the unprecedented shift in capital markets towards responsible investments. Companies are making net zero emissions commitments, and investors are demanding ESG

improvement throughout their portfolios. Governments are increasingly willing to engage with private capital to address social and environmental challenges, and new models of investing with purpose are being developed.

In this environment, we are proud to work with you to build a portfolio of investments that despite global market uncertainty has been financially resilient, but importantly, also has achieved deep positive impact. Together, we are all furthering the practice of impact investing, and transitioning the scale and power of capital markets to have a positive social and environmental impact.

We hope you enjoy reading this report and, as always, thank you for your ongoing support.



Matthew Tominc

on behalf of the Conscious
Investment Management team

OUR EXECUTIVE TEAM



Adam Gregory

Executive Chairman /
Board Director & IC



Alex Debney

Partner



Casey Taylor

Director



Edward Ring

Associate



Matthew Tominc

Chief Investment Officer /
Board Director & IC



Nicole Roebuck

Director



Tenielle Jordan

Director

OUR BOARD AND INVESTMENT COMMITTEE



Giselle Roux

Investment Committee
Member



Kate Temby

Investment Committee
Member



Paul Sundberg

Investment Committee
Member



Radek Sali

Board Director



Richard Price

Investment Committee
Member

Our impact

Conscious Investment Management ("CIM") exists to make investments that deliver a positive social or environmental benefit, alongside market rate financial returns. We focus on investing in housing, solar, and social impact bonds. Our portfolio creates additional, measurable, and positive impact.

CIM by the numbers (since inception)



\$238m

asset value of impact investments made*



414

investors incorporating impact investment in their portfolios



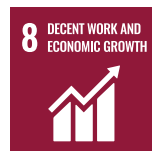
8

impact partners supported



8

Sustainable Development Goals addressed



8

impact investments



5

new impact investments in FY21

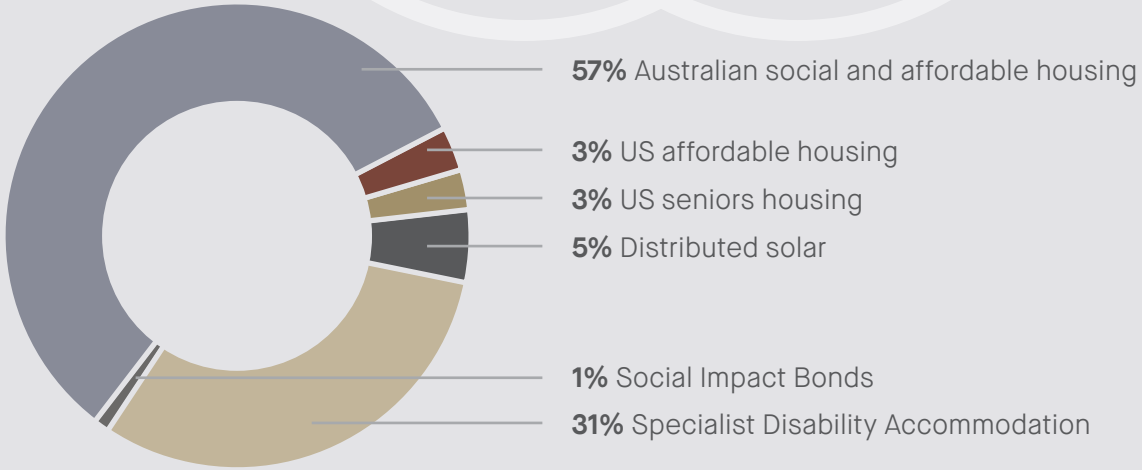


100%

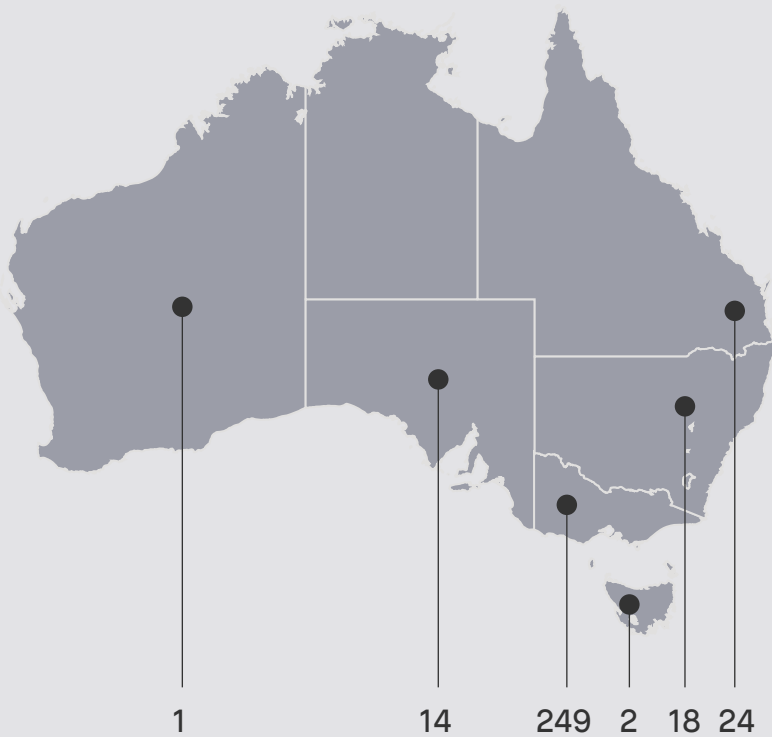
coverage ratio of fund holdings

*As at 30 June 2021

Portfolio Composition*



Asset Locations



	●	●	●	●
VIC	52	177	19	1
NSW	-	-	18	-
SA	10	-	3	1
WA	-	-	1	-
TAS	-	-	2	-
QLD	22	-	4	-
TOTAL	84	177	47	2

	●	●
USA	44 [^]	2,441 [^]

- Disability apartments
- Social Housing apartments
- Solar assets
- Social impact bonds
- Seniors housing apartments
- Affordable housing (mezzanine financing)

*Includes all CIM managed funds

[^]CIM has invested alongside a syndicate of investors, and has therefore only partially funded these assets



IMPACT INVESTMENT OVERVIEW

Specialist Disability Accommodation

Distributed Solar

5

IMP* Score

Contribute to solutions

4

IMP Score

Contribute to solutions

Victorian Social and Affordable Housing

Seniors Housing

Affordable Housing

5

IMP Score

Contribute to solutions

3

IMP Score

Benefit stakeholders

3

IMP Score

Benefit stakeholders

0-2

Act to avoid harm = score between 0 and 2

2.1-3.4

Benefit stakeholders = score between 2.1 and 3.4

3.5-5

Contribute to solutions = score between 3.5 and 5



3,022

MWh of renewable energy generated or fossil fuel generation avoided

Equivalent to **2,568 tonnes** of atmospheric carbon emissions saved or **10,249 trees** planted

2,441

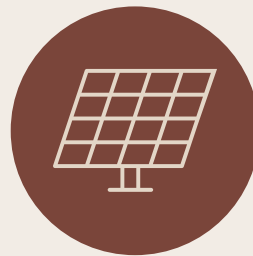


Provided mezzanine financing for 2,441 affordable housing dwellings*



177

Social and affordable housing dwellings financed



48

Distributed solar assets financed



44

Seniors housing dwellings financed*



84

Disability apartments financed

*CIM has invested alongside a syndicate of investors, with the numbers shown on this page representing CIM's pro rata share of assets

Contact Us

Please reach out to the CIM team for additional detail on anything discussed in this report at info@consciousinvest.com.au.

Important Information

Conscious Investment Management Pty Ltd ACN 630 131 476 is an Authorised Representative of Conscious Investment Management Funds Pty Ltd ACN 643 052 877 | AFSL No. 526820 | AR No. 1275316.

Channel Capital Pty Ltd ACN 162 591 568 | AR No. 1274413 "Channel" is Conscious Investment Management Pty Ltd's distribution partner.

MARQ Private Funds Pty Ltd ACN 604 351 591 | AFSL No 473984 ("MARQ") is the trustee of the Conscious Investment Management Impact Fund and the CIM Social Housing Fund I. Ranelagh Impact Pty Ltd ACN 637 905 849, a subsidiary of MARQ, is the trustee of the CIM SDA Fund I.

This presentation has been prepared by Conscious Investment Management Pty Ltd for information purposes only and does not take into consideration the investment objectives, financial circumstances or needs of any particular recipient – it contains general information only. Before making any decision in relation to The Impact Fund, you should consider your needs and objectives, consult with a licensed financial adviser and obtain a copy of the Information Memorandum, which is available by contacting Conscious Investment Management Pty Ltd on 03 9005 4606 or visiting www.consciousinvest.com.au.

No representation or warranty, express or implied, is made as to the accuracy, completeness or reasonableness of any assumption contained in this presentation. To the maximum extent permitted by law, none of Conscious Investment Management Pty Ltd, Channel, MARQ, their directors, employees or agents accepts any liability for any loss arising, including from negligence, from the use of this document or its contents. This document shall not constitute an offer to sell or a solicitation of an offer to purchase or advice in relation to any securities within or of units in any investment fund or other investment product described herein. Any such offer shall only be made pursuant to an appropriate offer document.

Past performance is not indicative of expected future performance.

All company images and emblems used throughout this presentation are the property of those companies and may be subject to copyright and trademark protection.





CONSCIOUS
INVESTMENT MANAGEMENT